

INSTALL GUIDE

Decking Systems

SUBFRAME INSTALLATION

1. Place joists around perimeter of area to be decked, and connect together using corner connectors and 13mm screws (FIG 1)



FIG 1

2. Level the frame to the required height using the pedestals/ cradles supplied (FIG 2)

 Please note: Joist span capabilities:

DS22	400mm between supports
DS38	600mm between supports
DS72	1200mm between supports (600mm if using DS72 with RDC cradles)


 Please note: Pedestals are prone to be brittle in very cold temperatures so additional care should be taken when clipping joist into place




FIG 2

3. Attach main joists inside perimeter frame, in a perpendicular direction to intended direction of decking (FIG 3,4)



FIG 3

See joist span capabilities above for pedestal spacing.

 Please note: Joists must be spaced at 350mm centres and fixed to perimeter joists using corner connectors and 13mm screws


 Please note: Wherever board ends meet, a double joist is required to provide sufficient support for ends of board



FIG 4

4. Install perimeter profile using 13mm screws (FIG 5)

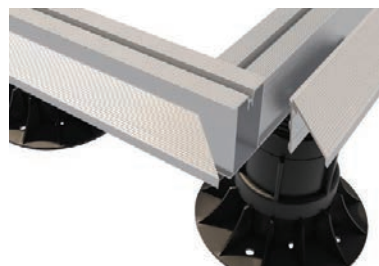


FIG 5

INSTALL GUIDE

Decking Systems

DECKING INSTALLATION

1. Fix starter/end clips along one perimeter edge with 19mm screws (FIG 6)



FIG 6

2. Slide first deck board into the clips and secure the other side of the board using plastic t-clips and 38mm black screw directly through fixing channel of joist. Only tighten clips once next boards are in place (FIG 7)

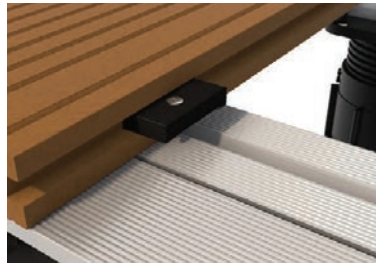


FIG 7

🔊 Please note: Achieve completely uniform board gaps by ensuring all boards are firmly pressed against t-clips

🔊 Please note: where boards meet end-on-end, ensure that a 5mm gap is left between board ends to allow for natural expansion of boards

3. Repeat this process until the whole area is decked (FIG 8)



FIG 8

4. Install starter/end clips along edge prior to installing final two boards, and slot boards into place, before tightening clip as shown (FIG 9)



FIG 9

For further advice or support call our friendly team on 01992 622 823 or email sales@tbspoly.com